



EaPEC 2019

Russification of open science services for Beneficiary partners of EaPConnect

HANNA KARPENKA

UNITED INSTITUTE OF INFORMATICS PROBLEMS OF THE NATIONAL
ACADEMY OF SCIENCES OF BELARUS

Yerevan, 26.09.2019



Mark D. Wilkinson

Chair of Centre for Plant
Biotechnology and Genomics,
Madrid University .

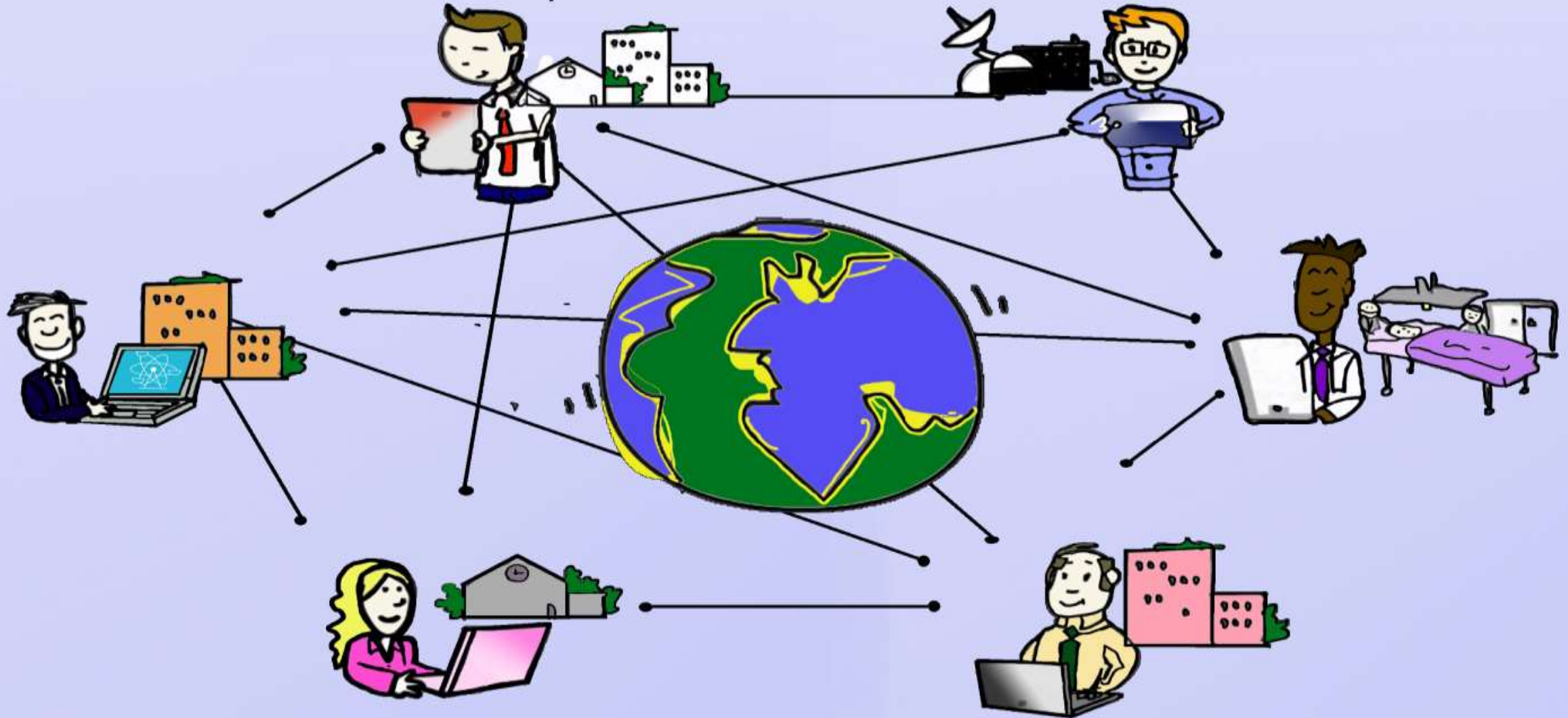
Research in Web Semantics, Data
linking, Artificial Intelligence applied
to "big" biological data, Natural
Science, Engineering and Medicine
and Information Science.

Good data management is not a goal in itself, but rather is the key conduit leading to knowledge discovery and innovation, and to subsequent data and knowledge integration and reuse by the community after the data publication process.

<https://www.nature.com>

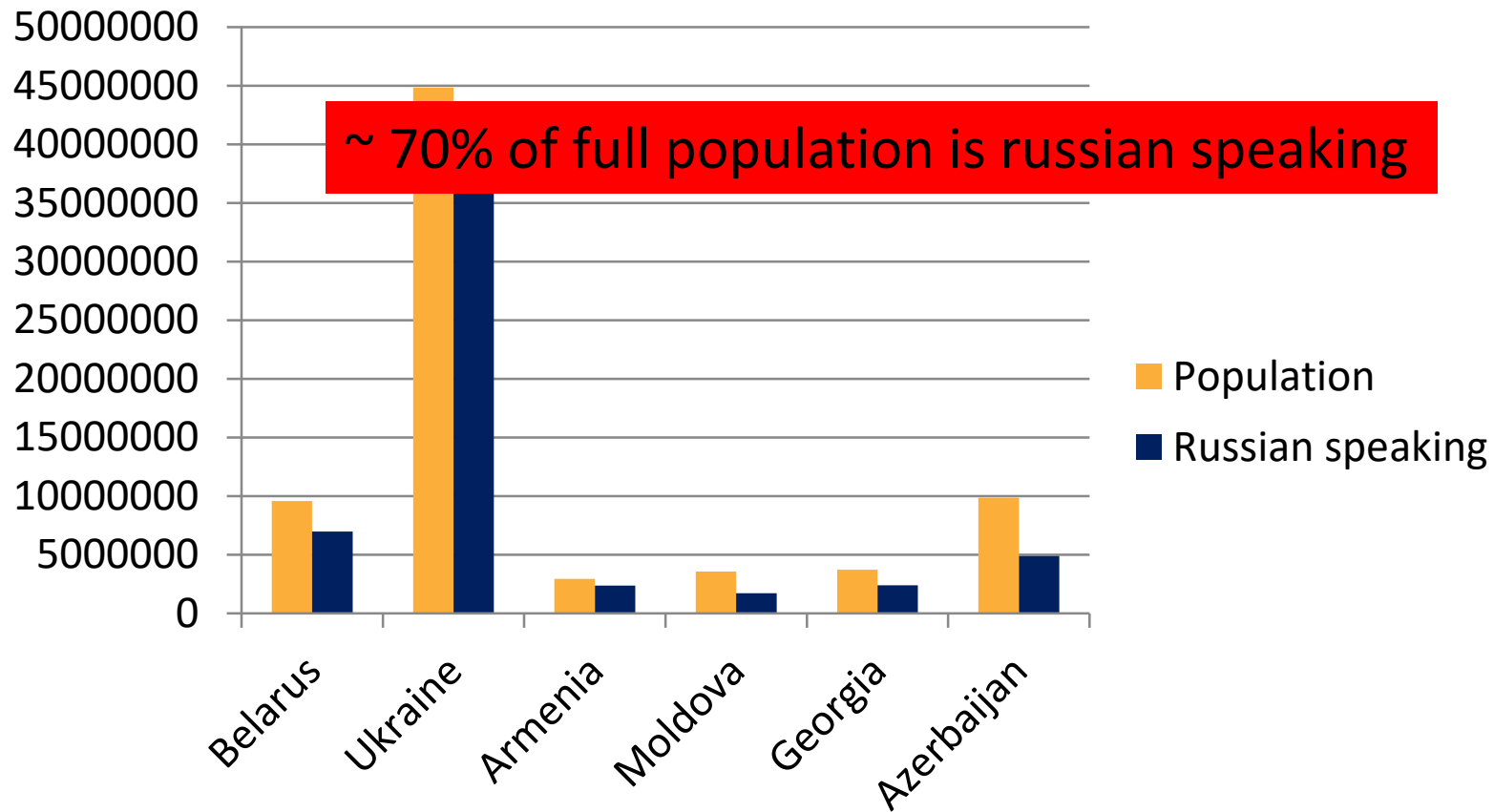
LANGUAGE FOR SCIENCE AND TECHNOLOGY

Over 80% of the information stored on computers worldwide is in **English**



WHY RUSSIFICATION?

Russian speaking in Beneficiary partners countries



EF EPI

English Proficiency Index

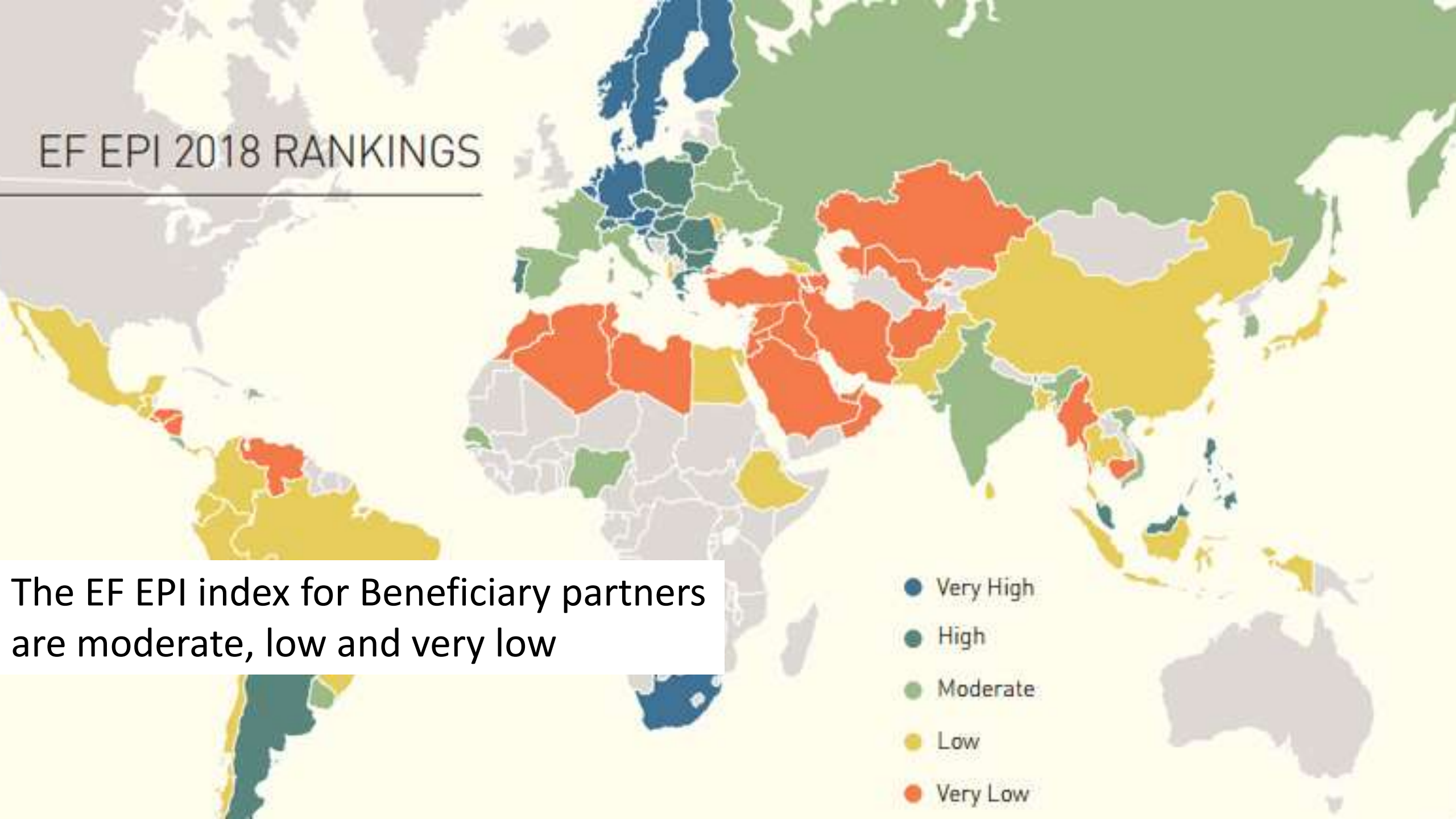
EF EPI 2018



EF EPI PROFICIENCY BAND



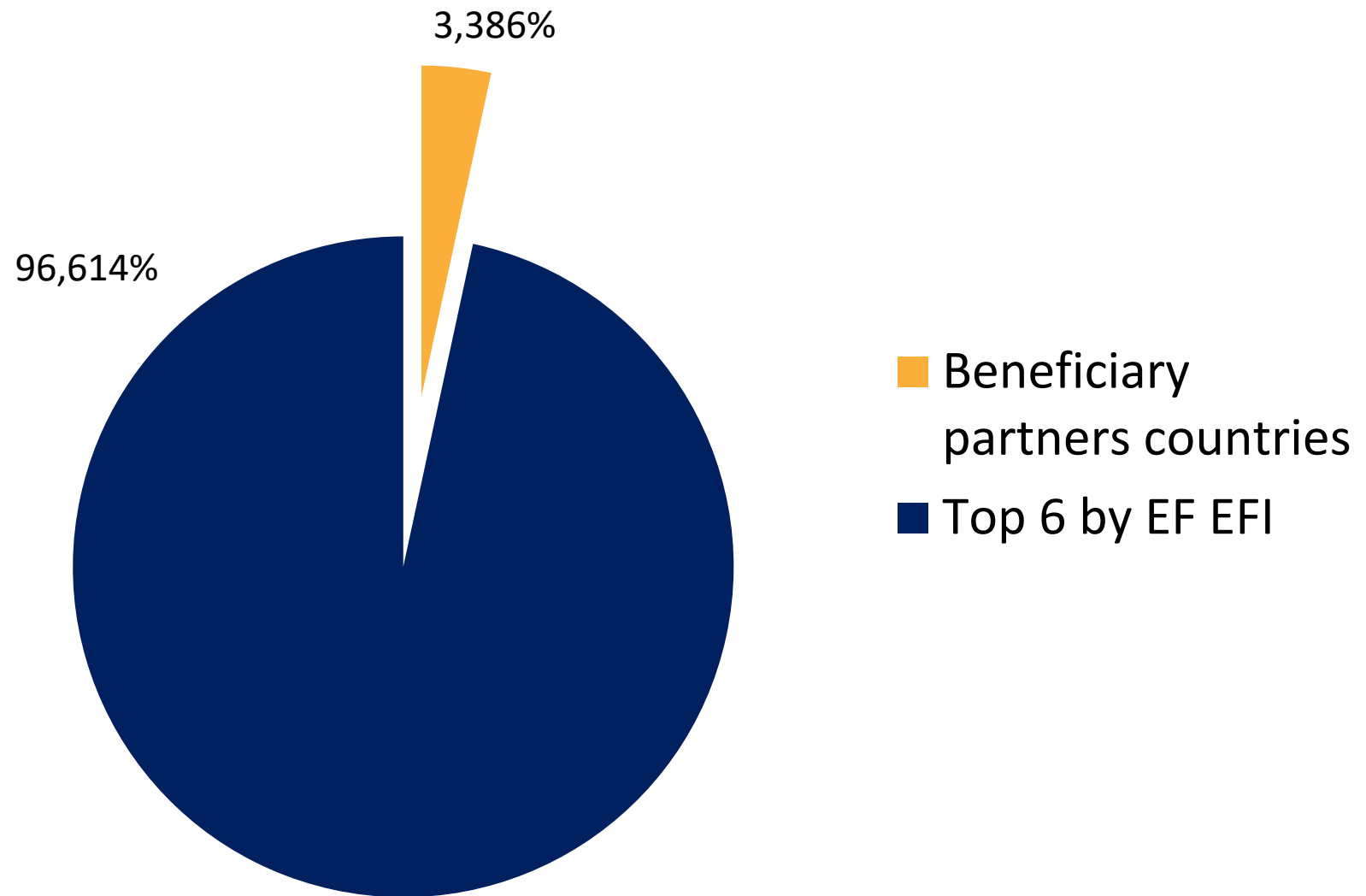
EF EPI 2018 RANKINGS



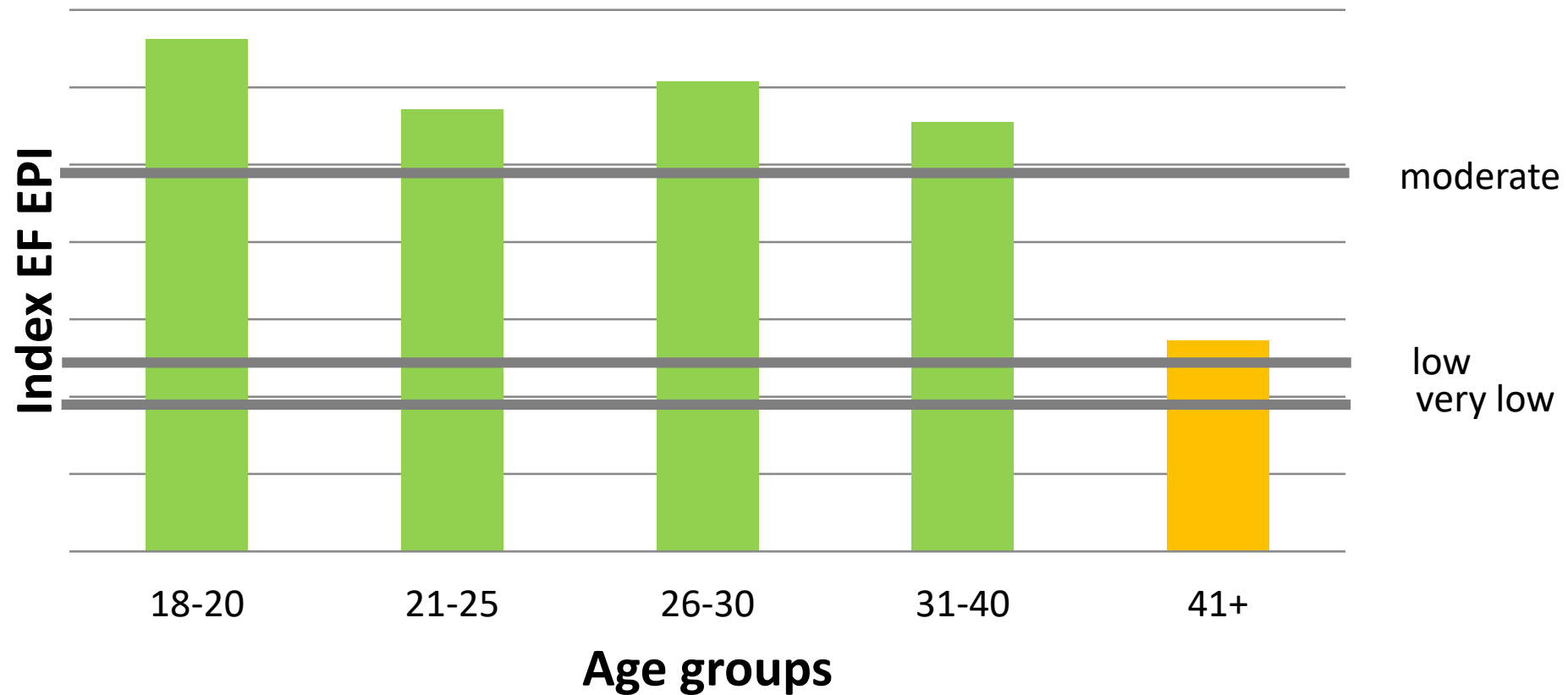
The EF EPI index for Beneficiary partners are moderate, low and very low

zenodo

Number of publications on the Zenodo



GLOBAL AGE GAP



Summary

The development of the interface in Russian is necessary for more scientists from Belarus, Ukraine, Moldova, Armenia, Azerbaijan and Georgia to have access to open scientific services.

This would help to make research, data and dissemination more accessible to all levels of the society concerned and would help to broaden the user base.

THANK YOU
FOR YOUR ATTENTION

Hanna Karpenka
rfe.karpenko@gmail.com
+375 29 666 54 58